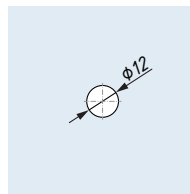
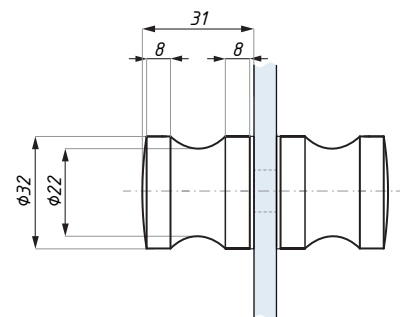


KH32

Dveřní úchyt (ø 32 mm)
Door knob (ø 32 mm)



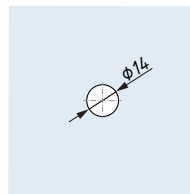
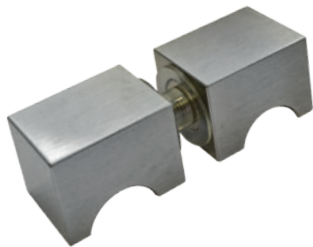
Příprava skla
Glass preparation



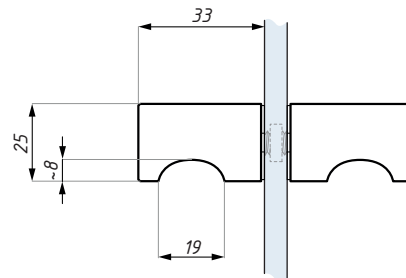
Kód / Code	Materiál / Material	Povrch / Finish
KH32 PC	mosaz / brass	lesklý chrom / polished chrome
KH32 SC	mosaz / brass	matný chrom / satin chrome
tloušťka skla (mm): 8 - 12		glass thickness (mm): 8 - 12

KH33

Dveřní úchyt (25x25 mm)
Door knob (25x25 mm)



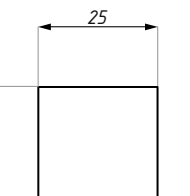
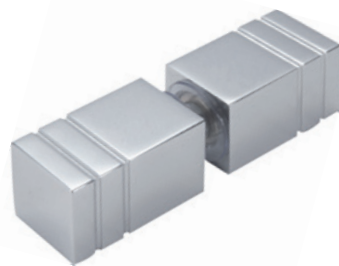
Příprava skla
Glass preparation



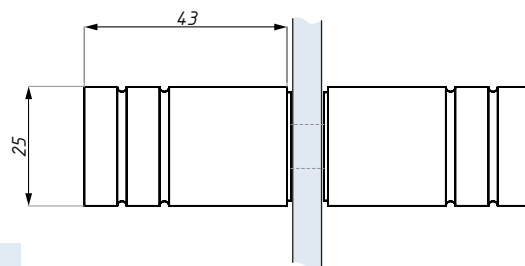
Kód / Code	Materiál / Material	Povrch / Finish
KH33 PC	hliník / aluminium	lesklý chrom / polished chrome
KH33 SC	hliník / aluminium	matný chrom / satin chrome
tloušťka skla (mm): 8 - 12		glass thickness (mm): 8 - 12

KH43

Dveřní úchyt (25x25 mm)
Door knob (25x25 mm)



Příprava skla
Glass preparation



Kód / Code	Materiál / Material	Povrch / Finish
KH43 PC	hliník / aluminium	lesklý chrom / polished chrome
KH43 SC	hliník / aluminium	matný chrom / satin chrome
tloušťka skla (mm): 8 - 12		glass thickness (mm): 8 - 12

DOPRODEJ